



# **KOMAL INTERNATIONAL**

**The House of All Construction Machinery Spare Parts**

**CONCRETE BOOM PLACER**



**TRANSIT MIXER**



**RMC PLANT TWIN SHAFT & PAIN MIXER**



**STATIONERY CONCRETE PUMP**



**Boom Placer Parts & Accessories**  
**Batching Plant Parts & Accessories**  
**Concrete Pump Parts & Accessories**  
**Transit Mixer Parts & Accessories**

A-115-116, 1st Floor, Priyanka Tower, Pankha Market, Near Pillar No. 322, Moti Nagar, New Delhi-110015  
Ph. 9212791175, 9313683878 | Office 9212347251 | LandLine - 01125919564

[komalinternational@rediffmail.com](mailto:komalinternational@rediffmail.com) | [komalinternational5@gmail.com](mailto:komalinternational5@gmail.com) | [internationalkomal@yahoo.com](mailto:internationalkomal@yahoo.com)  
Web. : [www.komalinternational.in](http://www.komalinternational.in)

# Spare Parts For Concrete Boom Placer & Stationery Concrete Pump

S Valve HBT 40 C Sany



PRESSURE GAUGE



HYD. GEAR PUMP



FLAT GATE VALVE & CUP BODY



CONCRETE PIPE LINE BEND WEDGE TYPE



TAPPEARED PIPE



ROCK VALVE & ROCK VALVE SHAFT



RAM DM 180



PUMP ACCESSORIES



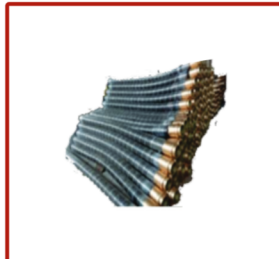
PUMPING CYLS.



SEAMES PIPE



RUBBER HOSE'S



SWING PLUNGER LIVER



SPECTICALE PLATE



HOUSING LINNING



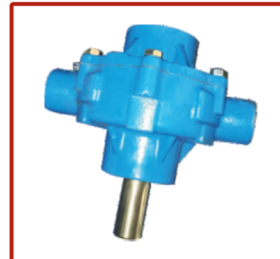
CONCRETE DELIVERY TUBE



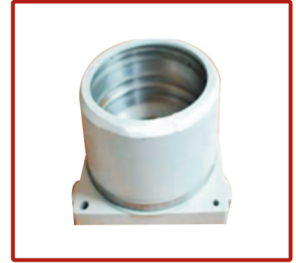
PIPE LINE CUPLINGS



BOOM PLACER WATER PUMP



OUTER HOUSING



S. VALVE ASSY.



AGITATOR PARTS



ELBOWS FOR BOOM PLACER



CONNECTION PIPE



DISCHARGE FLANGE ON 150

